

brace anchor™

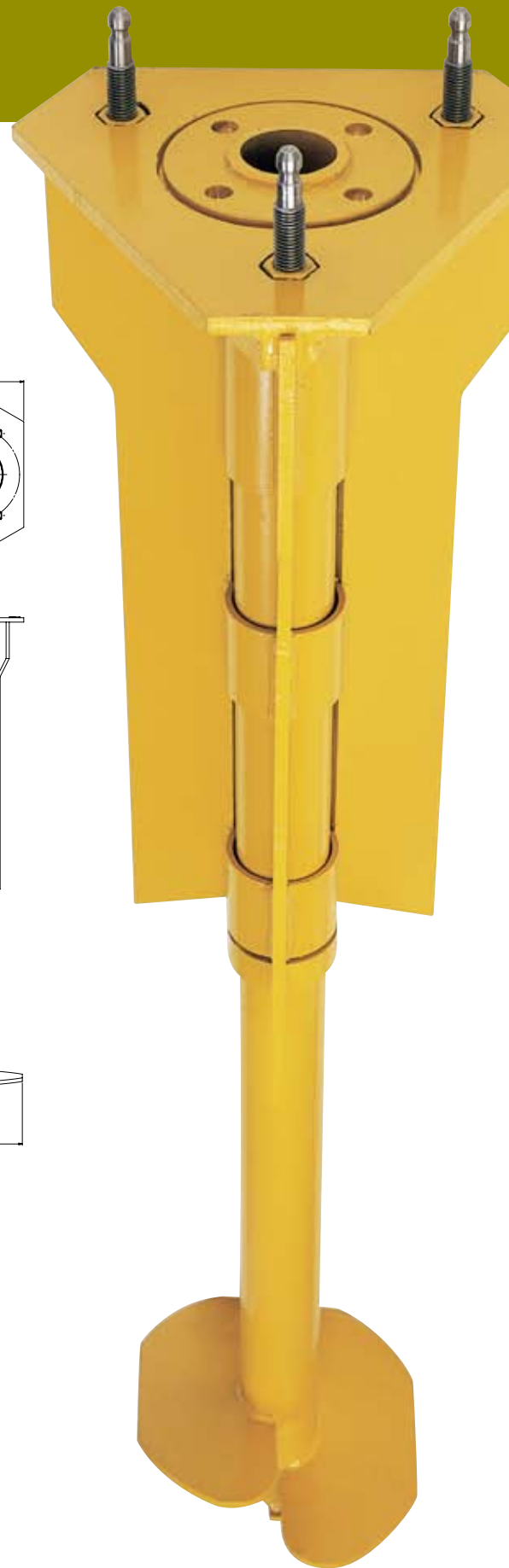
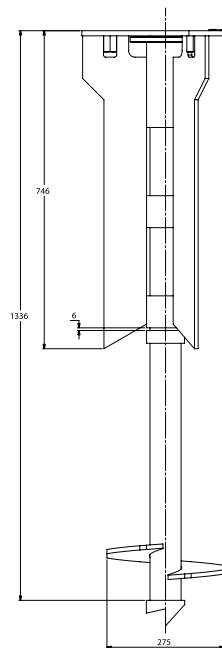
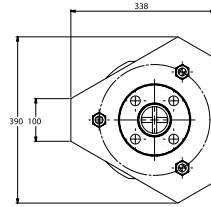
design criteria

Conceptually, the **brace anchor** was conceived from existing proven technology and developed as an alternative to cast in-situ concrete foundations. The original design criteria required that the product be economical, durable, easily installed and comply with all applicable standards and codes. Minor modification and testing has led to acceptance throughout the industry as the preferred method for temporarily supporting precast concrete panels.

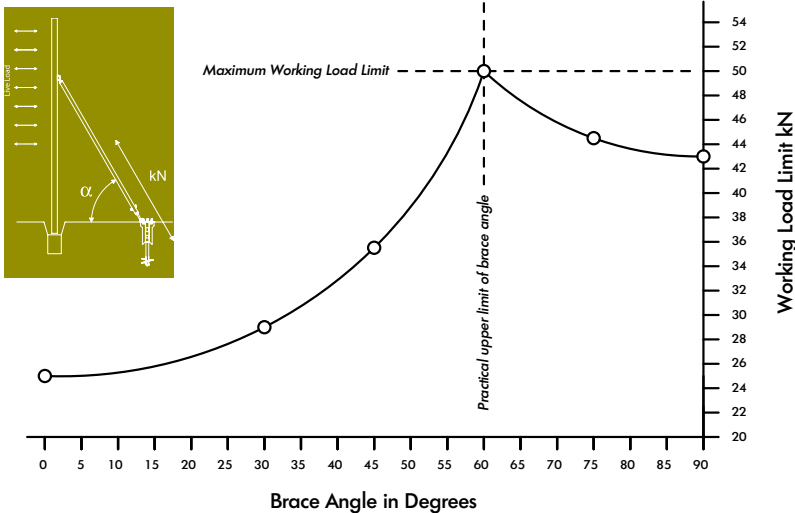
Projects undertaken include basements, offices, warehouses and other general precast concrete structures. **Brace Anchor** has successfully completed many projects all over NSW and VIC for the smallest owner builder through to the largest development and construction companies.

cost effective and safe

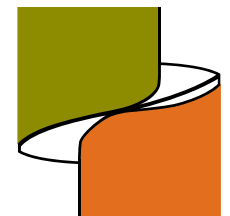
Brace anchor is an innovative, time saving and cost effective alternative to insitu concrete foundations for anchoring braces. It is certified and designed to adapt the T-Lock anti tamper system which ensures safety and peace of mind. Savings of up to 50% on the cost of conventional methods can be realised by the use of **brace anchors**.



Brace Anchor Directional Working Load Limits



BRACE



ANCHOR

brace anchorTM

Precaster Testimonials

Very professional. Brace Anchor know what they are doing and they perform the job cleanly, swiftly and easily.

CGA Bryson – Henny Mokadsi, Foreman and Director

Fantastic! Efficient! I was very impressed with Brace Anchor.

It saved us money compared to conventional concrete footings and eliminated the hassle of concrete footings that interfere with electrical, gas and water sewerage trenches. I can't recommend highly enough.

Beacon Constructions – Noel Smart, Foreman

We found Brace Anchor to be an excellent service to use. They are union endorsed and we will use them on all our developments that require temporary bracing panels.

Salta Constructions – Horst Richter, Project Manager

We choose to use Brace Anchor because of the ease of the construction process. Brace Anchor was easy to work with and very professional.

Metcalf Reidy – Dale Barton, Foreman

We intend to use Brace Anchor for most of our future precast developments, as they are a professional and well set up service.

Pellicano Builders – Chris Wells, Project Manager

Excellent service and cost effective – we will definitely use Brace Anchor whenever possible.

Westrock – Andy Simon, Foreman

Extremely good, solid system. Brace Anchor was quick, effective and eliminated the wastage associated with concrete pads and their removal.

ADCO – Trevor Merret, Foreman

installation steps



1. Plan and mark the location of each brace anchor on site.



2. Install each brace anchor where marked anytime before erection of the precast concrete panels.



3. Attach the foot of the brace to the brace anchor and fix the head of the brace to the precast concrete panel.

Contact Details

14 Deans Court Dandenong VIC 3175
PO Box 7062 Dandenong VIC 3175
t. 03 9793 9607 f. 03 9793 9608
e. brace.anchor@bigpond.com
www.braceanchor.com.au

for your local representative contact

manufactured by



with thanks to



Consistent with the continued development and improvement of all Brace Anchor products, the details contained in this brochure may be changed without notice.

This is not a technical document or working instruction. For information on use, technical data and safe load capacities contact Brace Anchor. The information contained herein must not be reproduced in whole or part without proper authority.